

DESIGN REVIEW BOARD WORK SESSION

April 14, 2020

DRB20-00082



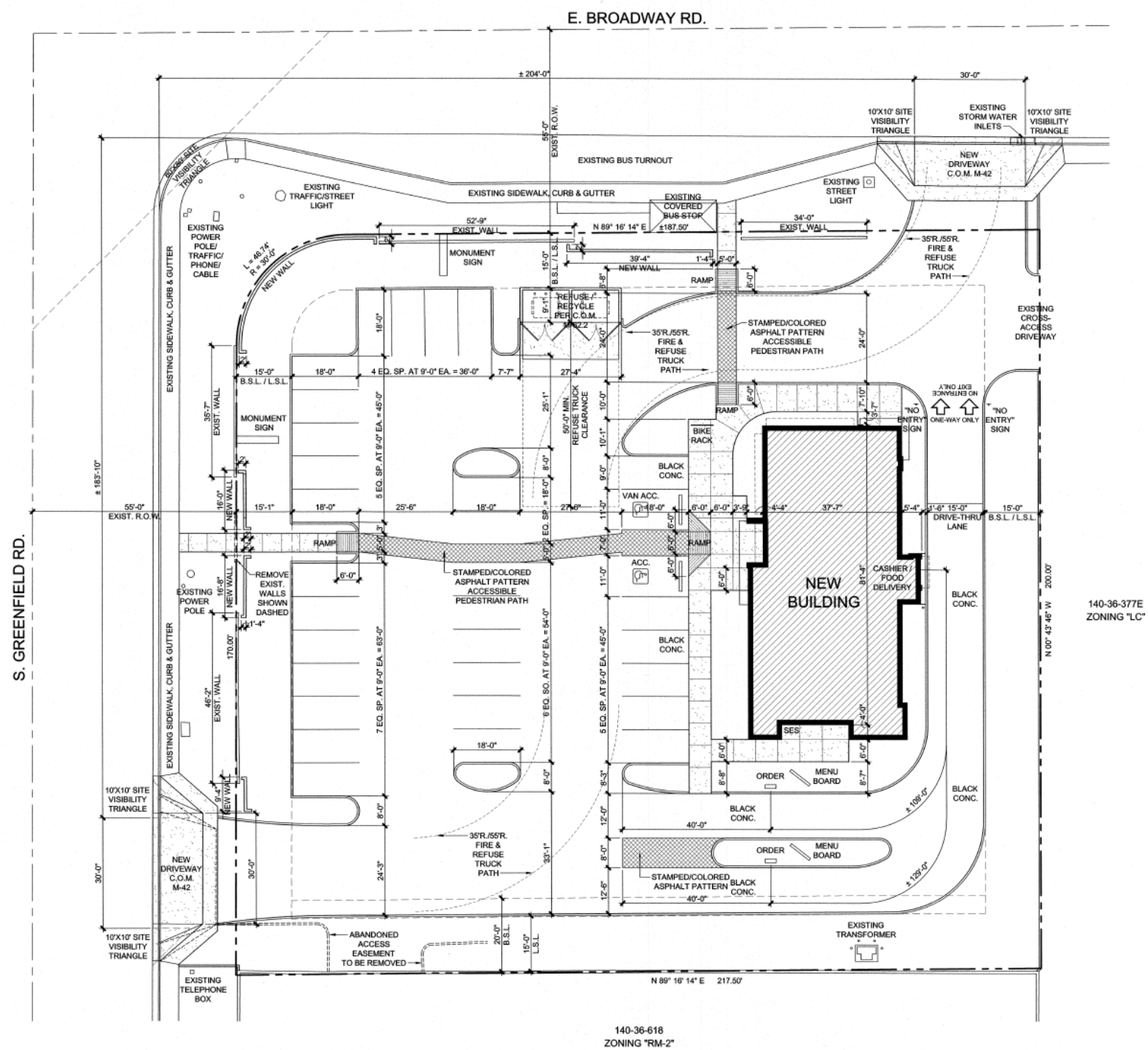


Looking - from Broadway

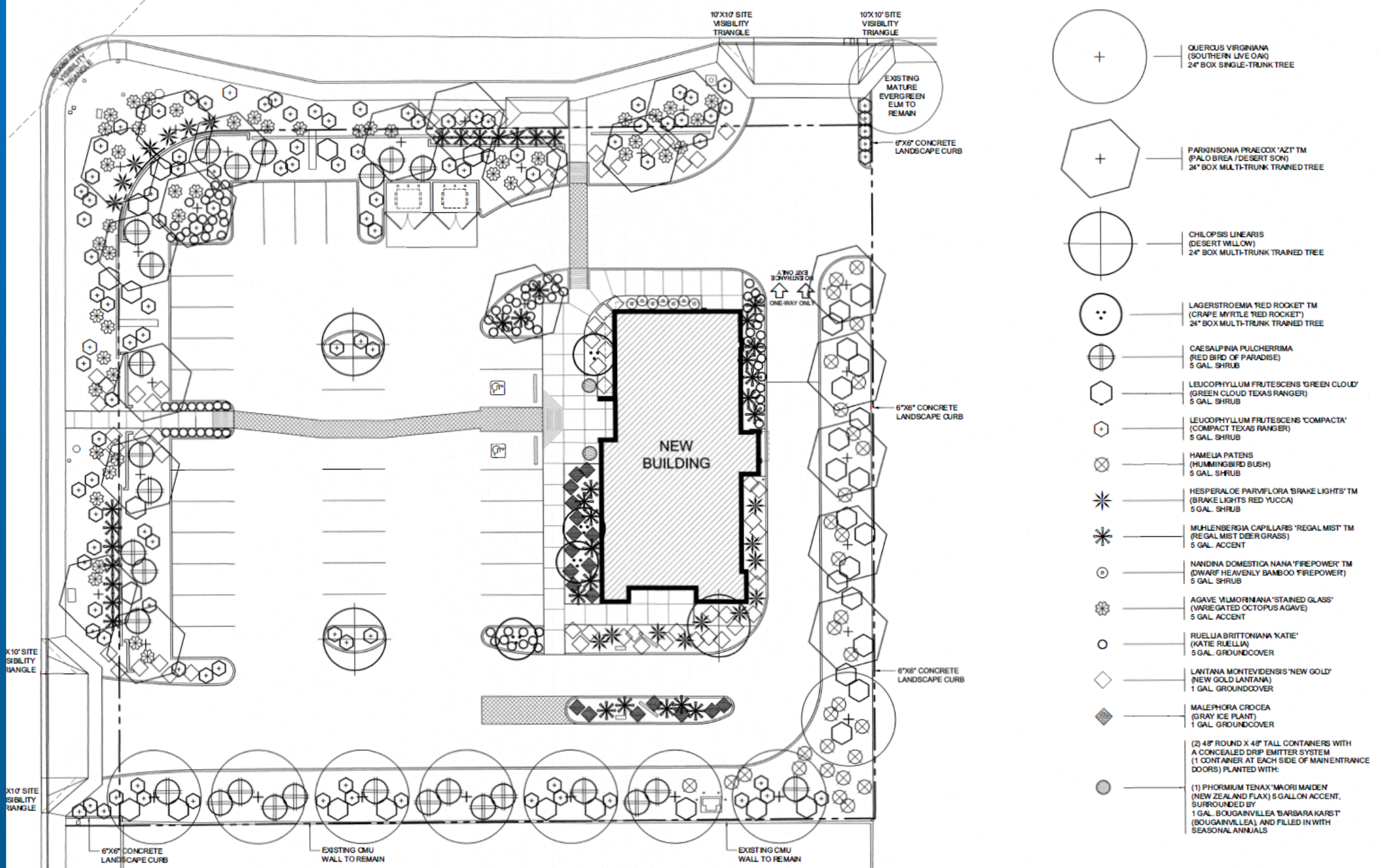


Looking east -
from Greenfield

SITE PLAN



LANDSCAPE PLAN





L32 WEST EXTERIOR ELEVATION

1/4"=1'-0"



WEST ELEVATION MATERIAL %

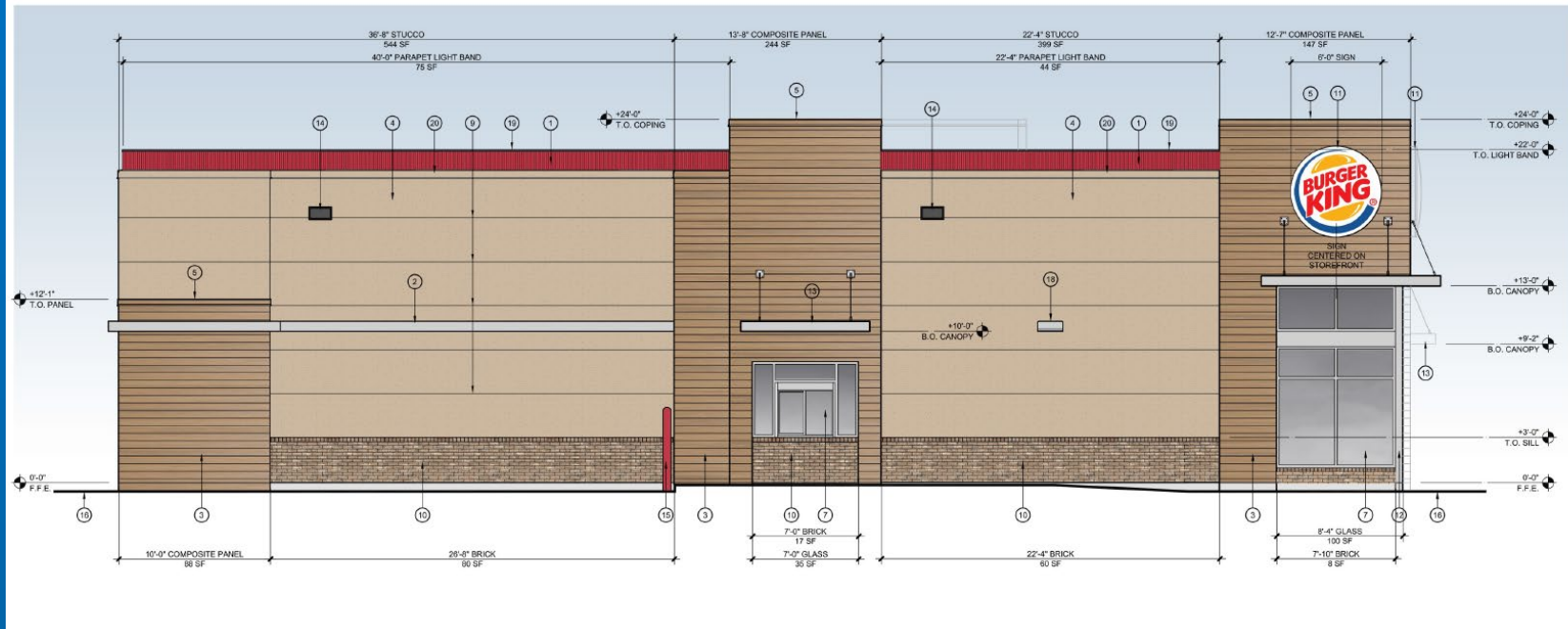
PARAPET LIGHT BAND	=	133 SF (7%)
SIGNAGE	=	28 SF (1%)
STUCCO / E.I.F.S.	=	815 SF (43%)
BRICK VENEER	=	207 SF (14%)
HORIZONTAL COMPOSITE PANEL	=	343 SF (19%)
METAL CANOPY	=	32 SF (2%)
ALUMINUM STOREFRONT / GLAZING	=	270 SF (14%)
TOTAL WEST ELEVATION	=	1,888 SF (100%)

NORTH ELEVATION MATERIAL %

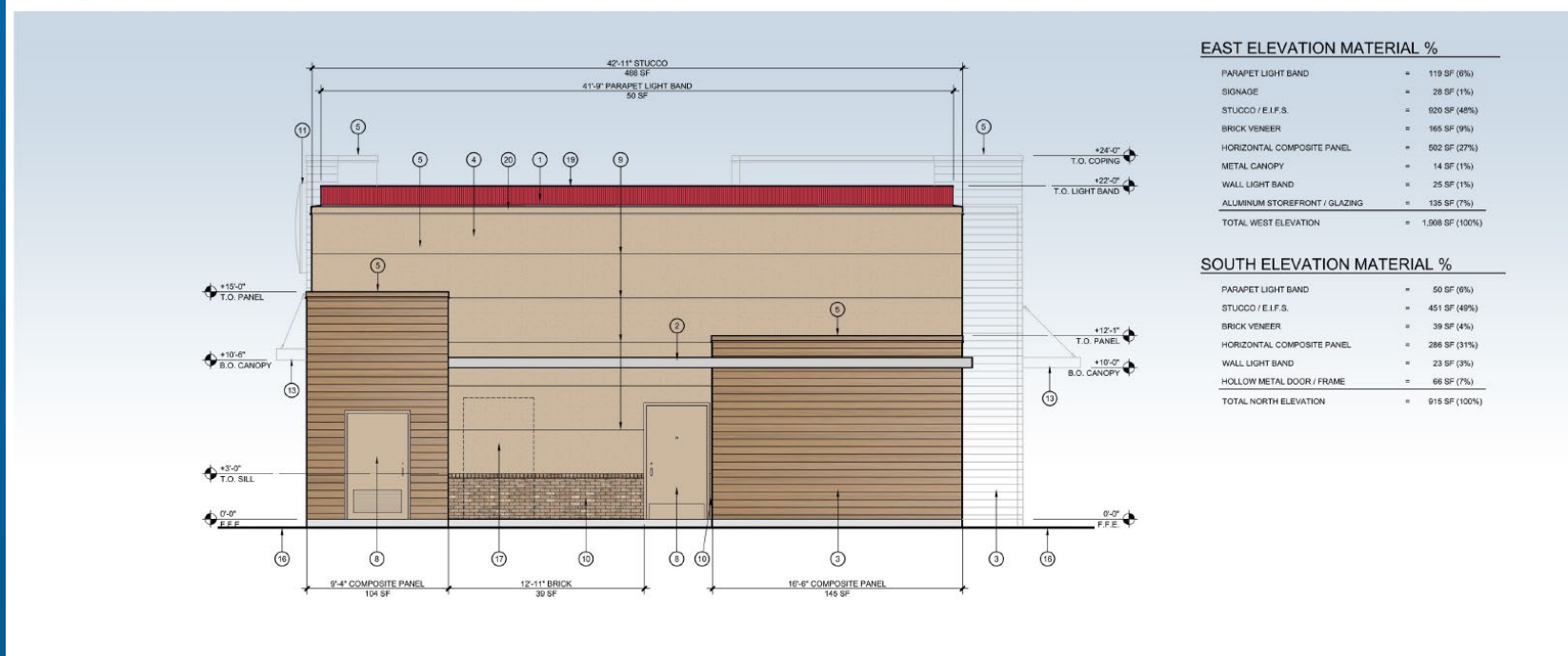
PARAPET LIGHT BAND	=	48 SF (6%)
SIGNAGE	=	28 SF (3%)
STUCCO / E.I.F.S.	=	248 SF (30%)
BRICK VENEER	=	45 SF (5%)
HORIZONTAL COMPOSITE PANEL	=	115 SF (14%)
METAL CANOPY	=	25 SF (3%)
ALUMINUM STOREFRONT / GLAZING	=	329 SF (39%)
TOTAL NORTH ELEVATION	=	838 SF (100%)

X32 NORTH EXTERIOR ELEVATION

1/4"=1'-0"



L32 EAST EXTERIOR ELEVATION
1/4"=1'-0"



EAST ELEVATION MATERIAL %

PARAPET LIGHT BAND	=	119 SF (6%)
SIGNAGE	=	26 SF (1%)
STUCCO / E.I.F.S.	=	920 SF (46%)
BRICK VENEER	=	165 SF (8%)
HORIZONTAL COMPOSITE PANEL	=	502 SF (27%)
METAL CANOPY	=	14 SF (1%)
WALL LIGHT BAND	=	25 SF (1%)
ALUMINUM STOREFRONT / GLAZING	=	135 SF (7%)
TOTAL EAST ELEVATION	=	1,908 SF (100%)

SOUTH ELEVATION MATERIAL %

PARAPET LIGHT BAND	=	50 SF (6%)
STUCCO / E.I.F.S.	=	451 SF (49%)
BRICK VENEER	=	39 SF (4%)
HORIZONTAL COMPOSITE PANEL	=	286 SF (31%)
WALL LIGHT BAND	=	23 SF (3%)
HOLLOW METAL DOOR / FRAME	=	66 SF (7%)
TOTAL SOUTH ELEVATION	=	915 SF (100%)

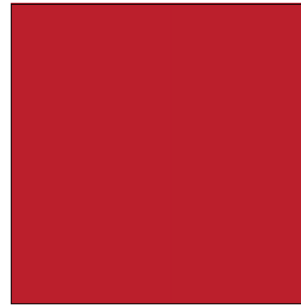
X32 SOUTH EXTERIOR ELEVATION
1/4"=1'-0"



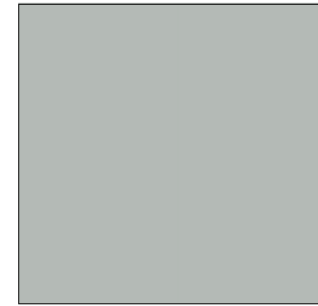
MATERIALS & FINISHES

- ① PARAPET L.E.D. LIGHT BAND - BURGER KING RED
- ② ALUMINUM STOREFRONT DOORS, WINDOWS AND FRAMES WITH CLEAR MILL FINISH & CLEAR DUAL-PANE INSULATED GLAZING, METAL CANOPIES, WALL-MOUNTED LIGHT BAND, WALL-MOUNTED LIGHT FIXTURES, PRE-FINISHED METAL COPING CAP TO MATCH METAL CANOPY FINISH
- ③ HORIZONTAL COMPOSITE CEMENTITIOUS PANEL SIDING - NICHIIA VINTAGE WOOD "CEDAR", PREFINISHED METAL COPING CAP - PRIMED & PAINTED FINISH PPG "CEDAR"
- ④ WESTERN ONE-KOTE STUCCO SYSTEM (ESR-1233) OR APPROVED E.I.F.S. EQUIVALENT WITH PRIMED AND PAINTED FINISH PPG "TANNER'S TAUPE", PREFINISHED METAL COPING CAP - FINISH TO MATCH PPG "TANNER'S TAUPE", HOLLOW METAL DOORS & FRAMES WITH PRIMED & PAINTED FINISH PPG "TANNER'S TAUPE"
- ⑤ THIN BRICK VENEER - HC MUDDOX "CHARDEL BLEND" (OR SIMULATED BRICK VENEER)
- ⑥ REFUSE ENCLOSURE GATES & BIKE RACK WITH PRIMED & PAINTED FINISH PPG "WARRIOR" 1076-6

PARKING LIGHT FIXTURES



①



②



③



④



⑤



⑥

Sketch
Architecture Company

2454 East Southern Avenue, Mesa, Arizona 85205
ph 480.668.8015 fax 480.668.8032

**BURGER KING
RESTAURANT**

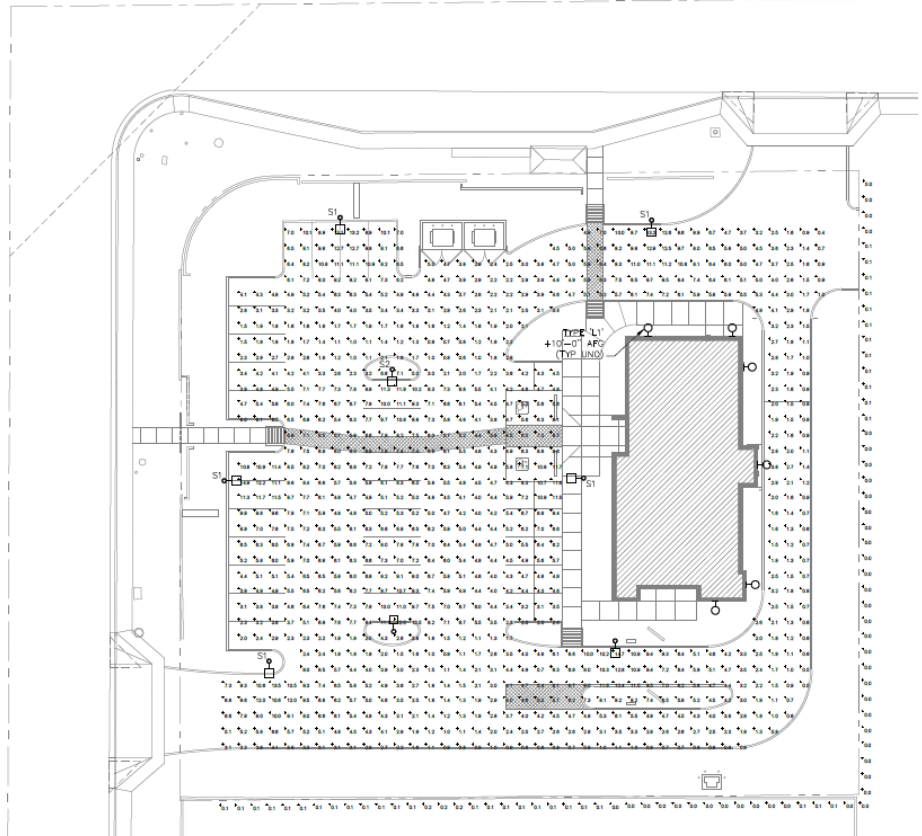
4403 E. BROADWAY RD.
MESA, ARIZONA 85206

SAC Project Number:
2020-02

- ✓ At least three distinct materials on each façade
- ✓ Exterior walls are proportioned to human scale
- ✓ Changes in plane and texture
- ✓ Building height is varied
- ✓ Entries are framed
- ✓ No more than 50% of a total façade may be covered with one single material

LUMINAIRE SCHEDULE table with columns: MARK, MANUFACTURER, CATALOG NO., MOUNTING, VOLTS, LAMP, VA, DESCRIPTION

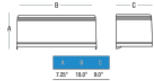
ALTERNATE NOTE. FIRST MANUFACTURE AND ASSOCIATED CATALOG NUMBER SHOWN INDICATES BASIS OF DESIGN...



RWSC LED RADIUS WALL SCIENCE



Dimensions



The RWSC LED radius wall science offers a combination of light distribution that meets the building facade while the radius soft face housing accentuates building architectural design elements...

Features
• Double end aluminum housing
• Integrated design eliminates high angle brightness

Mounting
RWSC features Intelligent Mounting Bracket which helps save time and money by allowing only one person to easily install...

Certifications/Listings UL, ETL, ENEC

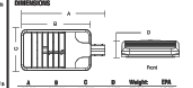
Ordering Information Ordering Example: RWSC - XL - XL - XX - U - XX - XX

RWSC product selection table with columns: RWSC, Fixture Size, Power, Voltage, Mounting, Finish, Options

1 SCALE(S) FIXTURE TYPE 'L1'



VIPER L SERIES Enhanced Large Viper Luminaire



Intended Use
The VIPER L Series is available in two sizes with a wide choice of optional LED wattages...

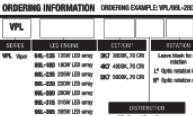
Options/Configuration
A luminaire with an optional passive infrared (PIR) motion sensor capable of detecting motion 300' ahead of the luminaire...

Specifications
Luminaire Height: 100" through 275" (27.5' to 70.0' tall)
Luminaire Width: 18" to 36" (4.5' to 9.0' tall)

SECURITY LIGHTING logo and contact information



VIPER L SERIES Enhanced Large Viper Luminaire



Intended Use
The VIPER L Series is available in two sizes with a wide choice of optional LED wattages...

Options/Configuration
A luminaire with an optional passive infrared (PIR) motion sensor capable of detecting motion 300' ahead of the luminaire...

Specifications
Luminaire Height: 100" through 275" (27.5' to 70.0' tall)
Luminaire Width: 18" to 36" (4.5' to 9.0' tall)

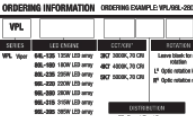
SECURITY LIGHTING logo and contact information

GENERAL NOTES

- A. POLE MOUNT FIXTURES ARE INSTALLED AT 15'-0" ABOVE FINISHED GRADE.



VIPER L SERIES Enhanced Large Viper Luminaire



ORDERING INFORMATION ORDERING EXAMPLE: VPL-ANL-02XW-048W-04L-T7H-LS-28-04-04-04-04

Options/Configuration
A luminaire with an optional passive infrared (PIR) motion sensor capable of detecting motion 300' ahead of the luminaire...

Specifications
Luminaire Height: 100" through 275" (27.5' to 70.0' tall)
Luminaire Width: 18" to 36" (4.5' to 9.0' tall)

SECURITY LIGHTING logo and contact information

RE ROWLEY ENGINEERS 2334 N. HUNT DRIVE MESA, AZ 85203 PHONE: (480) 313-1220 FAX: (480) 507-2008 RE PROJECT NO. SKET0117

- Staff has no major concerns
- The project meets the requirements of the MZO
- Staff welcomes any feedback on the proposed elevations

SUMMARY